

INVACARE® MATRX®  
**E2™ BACK**  
SERIES



The **NEW Invacare® Matrx® E2™ Back Series** has taken back support to a new level! Introducing hardware updates and new accessories for our best fit and easiest set up ever. New leading edge Ripple Foam technology is designed to provide temperature control and enhanced immersion for our most comfortable support ever.

## Call to order

**1.800.333.6900**

invacare.com

**1.888.433.6818**

motionconcepts.com



Yes, you can.®

**matrx®**  
SEATING SERIES

# INVACARE® MATRX® E2™ BACK

## Back Shell

- Holes provided for attachment of Headrest and Chest Harness Interface on all backs 14" and higher
- Three holes for attachment of PostureFlex Abdominal Support at desired position
- Notched sacral cutout



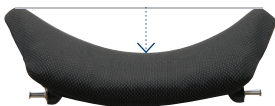
## Mounting Pins

- Height and Width Adjustable
- MiniSet fits chairs 1" narrower or 1" wider than back model width
- EasySet fits chairs 1" narrower or 2" wider than back model width
- EasySet may be ordered on backs 12" and interface on chairs 2" wider
- Height, depth, angle and even rotation can be adjusted with user seated in the back
- Hardware can be positioned to avoid frame obstacles like arm supports and rigidizer bars
- **MiniSet Pin Interface** standard on back heights up to 16", **EasySet Pin Interface** standard on 18" & 20" back heights

## E2 BACK



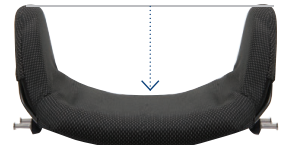
E2 - 3" Contour



## E2 DEEP BACK



E2 Deep - 6" Contour



## Product Specifications (E2S and E2D Backs)

- E2 backs are available in:
  - 1" width increments for precise fit to trunk
  - 2" height increments for desired support level
  - two contour depths for midline support required

Weight Capacity: 300 lb.

	WIDTH						
	14"	15"	16"	17"	18"	19"	20"
FITS W/C	13"-15"	14"-16"	15"-17"	16"-18"	17"-19"	18"-20"	19"-21"
6"	•	•	•	•	•	•	•
8"	•	•	•	•	•	•	•
10"	•	•	•	•	•	•	•
12"	•	•	•	•	•	•	•
14"	•	•	•	•	•	•	•
16"	•	•	•	•	•	•	•
FITS W/C	13"-16"	14"-17"	15"-18"	16"-19"	17"-20"	18"-21"	19"-22"
18"	•	•	•	•	•	•	•
20"	•	•	•	•	•	•	•

• MiniSet Hardware • EasySet Hardware

# INVACARE® MATRX® E2™ BACK



### Ripple Foam

- Airflow channels for temperature and humidity control
- Rippled top surface for immersion and comfort, solid HR backing for support and protection
- Extra immersion and shear reduction in spinal relief area
- Provides perfect fit of foam to back contour

### Cover

- Moisture resistant and breathable Meshtex™ outer cover
- Foam and cover overlap the shell for protection and comfort



### Matrix Protect Slipcover (optional)

- Moisture resistant Startex™ Slipcover compatible with disinfecting wipes
- Welded seams for advanced infection control
- Easy to apply and remove for laundering
- Available for E2S/E2D backs 16", 18", 20"W x 16", 18", 20"H

## MINISET HARDWARE

### STANDARD



MiniSet

### OPTIONAL



Fixed MiniSet



Heavy-Duty MiniSet

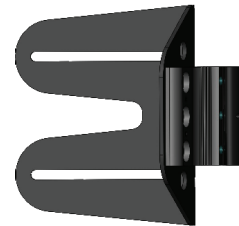
## EASYSET HARDWARE

### STANDARD



EasySet

### OPTIONAL



Fixed EasySet



Heavy-Duty EasySet



Split

**Adjustments:** – Angle (40°), depth (2" in front or behind back canes), can be offset for rotation.

**Fits:** – 1" back canes, inserts for 3/4" & 7/8" back canes included

### MiniSet

- **Standard** on all E2S/E2D backs up to 16" high
- Quick release

### Fixed MiniSet

- Low profile design compatible with rigid chairs, recommended for tilt/recline applications
- Requires tools for removal

### Heavy-Duty MiniSet

- Recommended for high tone or heavy use applications
- Quick release

### EasySet

- **Standard** on all E2S/E2D backs 18" and 20" high
- Quick release

### Fixed EasySet

- Recommended for tilt/recline applications
- Requires tools for removal

### Heavy-Duty EasySet

- Recommended for users with high tone or heavy intended use
- Quick release

### Split

- Allows clearance of frame obstacles, quick release
- Compatible with EasySet Pin Interface only

# INVACARE® MATRX® ACCESSORIES



Inside Mount

Outside Mount



## EasyFix Laterals

- Fixed laterals can be installed inside or outside of the back shell
- Height adjustable in vertical slot, can be offset
- Compatible with E2 standard contour backs 10" and higher



Offset

Standard

## Swing Away Laterals

- Standard or offset hardware available
- Compatible with E2 standard contour backs; Standard 10" and higher; Offset 12" and higher
- Available in 4 pad sizes:  
**XS:** 4.25" L x 3.25" H  
**S:** 5.25" L x 3.5" H  
**M:** 5.75" L x 3.75" H  
**L:** 6.5" L x 4.25" H



## PostureFlex Abdominal Support

- Designed to provide comfortable upright postural support
- Width and tension adjustable hook and loop closure
- Easy keyhole attachment
- 3 mounting heights available in pre-drilled holes on back shell
- Available in 2 sizes:  
**M:** 16 - 23" L x 6.5" H  
**W:** 20 - 32" L x 7" H



## Quad Release Tab for PostureFlex

Quad release tab for easy independent application and removal of PostureFlex



## BackBone

- Contoured anatomical PSIS/Sacrolumbar Support
- Can be trimmed to desired size
- Molded in loop fastener for attachment to back shell and ease of adjustment



## Matrx Privacy Flaps

- Attach to loop strip on E2/E2D backs
- Available in 4 sizes:  
**XS:** 14"W  
**S:** 15" & 16"W  
**M:** 17" & 18"W  
**L:** 19" & 20"W



## Chest Harness Interface

- Allows precise placement of Shoulder Strap Guides for most effective positioning  
**E2CHI-S:** 14" to 15"W backs  
**E2CHI-M:** 16" to 20"W backs



E2HDI

## Headrest Interface

- **E2HI** Molded lightweight, low profile mounting plate for headrest attachment
- Easy to install without removing back cover
- Included with all backs 14" and higher
- **E2HDI** Optional extra strong steel headrest mount for extreme tone or heavy use applications

**Invacare Corporation**  
www.invacare.com

**USA**  
One Invacare Way  
Elyria, Ohio  
44035-4190  
(800) 333-6900

**Canada**  
570 Matheson Blvd. E.  
Unit 8  
Mississauga, Ontario  
L4Z 4G4 Canada  
(800) 668-5324

**Motion Concepts**  
www.motionconcepts.com  
info@motionconcepts.com

**USA**  
700 Ensminger Rd., Suite 112  
Tonawanda, NY 14150  
(888) 433-6818  
Fax: (888) 433-6834

**Canada**  
84 Citation Dr., Unit 1-7  
Concord, ON L4K 3C1  
(866) 748-7943  
(905)-695-0134  
Fax: 905-695-0138

© 2020  
Invacare Corporation.  
All rights reserved.  
Trademarks are identified by the symbols <sup>TM</sup> and ®. All trademarks are owned by or licensed to Invacare Corporation unless otherwise noted. Matrx is a registered trademark of Motion Concepts. Otto Bock is a trademark of Otto Bock HealthCare. Specifications are subject to change without notification.  
Form No. 20-124  
Rev. 12/07  
200560

