



LIGHTWEIGHT ROLLATOR

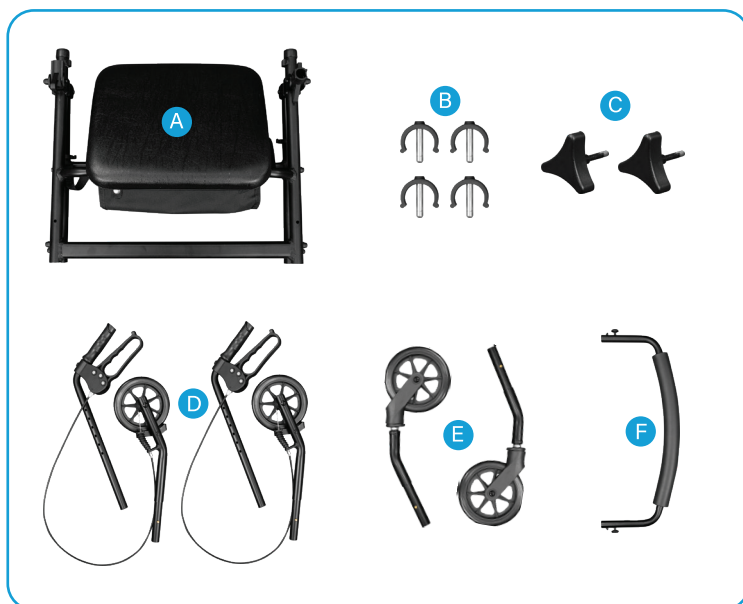
**Owner's Manual
MOB1079**



To see all of the FAQs in one place,
visit vhealth.link/jx0

WHAT'S INCLUDED

- A** Rollator Base
- B** C-Clips x4
- C** Tri-Point Screw Knob x2
- D** Right and Left Leg/Handles x2
- E** Front Legs x2
- F** Backrest



ASSEMBLING THE LIGHTWEIGHT ROLLATOR

CAUTION: Do not attempt to adjust or operate the Vive Lightweight Rollator without carefully reading all instructions in this manual.

Step 1.

Unfold the (A) Rollator Base and pull down on the lock bar (away from the seat) to lock the rollator into the open position.



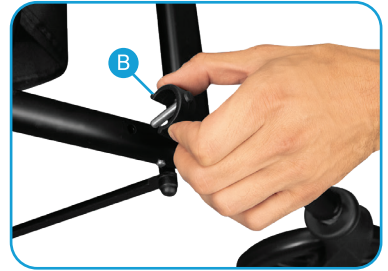
Step 2.

Insert the (E) two Front Legs on each side of the Base. Notice that the front on the device is the long bar that extends down from the top insert where we will later place the handles, The back legs are on the folding hinge section. When inserting the front legs you will notice the leg has an inward bend like the image below.



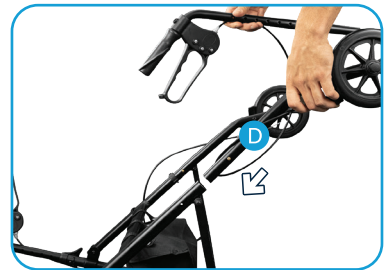
Step 3.

Make sure the pins on the leg click into place, then Insert a (B) C-Clip on both of the recently installed front legs.



Step 4.

Insert the (D) Back Legs onto the Base, Make sure the wheels of the device are on the outside of the device and not on the inside within your walking area.



Make sure the push pins are clicked into place and then insert the C-clips just as you did in step 3. Double check again your wheel placement, If you install the wheels on the inside instead of the outside you will not be able to properly complete the next step.



Step 5.

Insert the handles into the top of the base. Be careful not to cross them, keep the left handle on the same side as the left wheel etc.

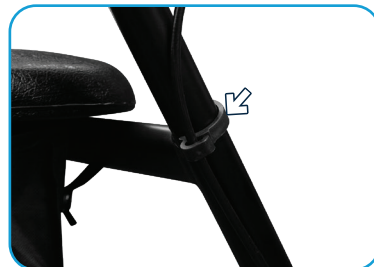


Step 6.

Decide what height might work best for you, then insert the (C) Tri-Point Screw Knob into the designated holes to lock the handles in place. Screw down until completely tightened.

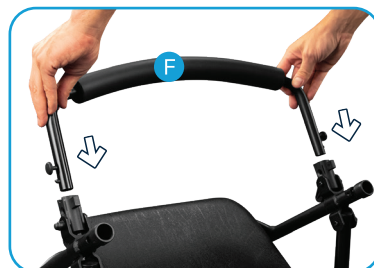


Use the plastic clips on the sides of the Rollator to secure the brake wires against the rollator.



Step 7

Place the (F) Backrest onto the device by pressing into the side button and clicking it locked into place.



Step 8

The Bag should come pre-installed but check to make sure all of the snaps are fastened.



SAFETY PRECAUTIONS REGARDING ASSEMBLY

Perform the following safety checks and resolve any issues before using the Rollator.

1. Ensure the Lightweight Rollator is fully unfolded/opened, that the seat is down, and that the folding bar underneath the seat is locked in the down position.
2. Ensure that both knobs are fully tightened and at equal heights on each side of the rollator. Test the rollator for stability before applying full weight to the hand grips.
3. Test the loop locks before operating the rollator. When the loop lock braking system is engaged (see illustrations for locking and releasing locks below), the locking bar on the rear wheels should prevent the wheels from rolling. If the wheels roll while the brakes are locked, please contact your dealer for adjustment. When the locks are released, the wheels should roll freely.
4. Always lock the loop locks before sitting and do not use the seat when the unit is on an incline or uneven ground.
5. Replace the tires when they become significantly worn or if they become damaged.
6. Do not push a person seated on the rollator. The rollator is a walking aid only and not to be used as a transportation device.
7. Do not exceed the weight capacity of 300 lbs.

OPERATING THE BRAKES

Always engage and disengage the wheel locks on both sides simultaneously. To operate the Brakes:

1. To Slow Down or Come to a Temporary Stop - Pull up slowly on the brakes with four fingers until the unit slows down or comes to a stop.
2. To Temporarily Lock the Wheels in Position - Press down on both hand brakes with the palms until you hear a "click" that indicates that the wheels are locked.
3. To Release the Wheel Locks - Pull up on both loop locks.



MAINTENANCE AND CARE INSTRUCTIONS

Vive recommends periodic visual inspection of this product by the user or the user's caregiver(s) to ensure that components are in good working order and not worn, torn, frayed, or loose, and that there are no obstructions or impediments to normal, safe operation. If any part or mechanism appears to be unsafe or compromised, do not use the product. If you experience problems, please contact the provider that sold you the product or visit vivehealth.com for more information.

WARNINGS

- Always lock the loop locks before sitting and do not use the seat when the unit is on an incline or uneven ground.
- Replace the tires when they become significantly worn or if they become damaged.
- Do not push a person seated on the rollator. The rollator is a walking aid only and not to be used as a transportation device.
- Do not exceed the weight capacity of 300 lbs.

HAVE MORE QUESTIONS?

Check out our list of Frequently Asked Questions at
vhealth.link/jx0 for helpful answers.



And if that doesn't answer your question, our customer service team would love to help! Feel free to connect with them by phone, e-mail, or chat on our website.



sales@aracent.com



1-888-550-7750



aracent.com

Distributed by

vive
health

8955 Fontana Del Sol Way
Naples, FL 34109
Made in China